

# GARMENT SPECIFICATION SHEET

## POLYCOTTON COVERALL



### FEATURES

- Concealed stud front fastening.
- 2 breast pockets with stud fastening shaped flaps.
- Front and back yokes.
- Hip and rule pocket to back right leg.
- 2 side swing pockets with trouser access.
- Side elastication with action back.
- Plain hemmed sleeves.
- Twin needle stitching.

### FABRIC

Polyester/Cotton

### WEIGHT

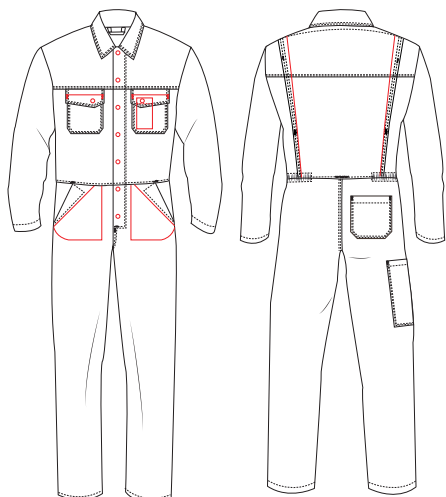
245gsm

### FABRIC CARE

Industrial Laundry

### SIZE RANGE

SML - 4XL  
Regular, Tall



### STD COLOUR (stock supported) COLOUR

- |                                                                                      |              |                                                                                       |            |
|--------------------------------------------------------------------------------------|--------------|---------------------------------------------------------------------------------------|------------|
|  | Black        |  | Royal Blue |
|  | Navy         |  | Smokeberry |
|  | Bottle Green |  | Empire Red |
|  | Charcoal     |  | White      |
|  | Convoy Grey  |                                                                                       |            |