

GARMENT SPECIFICATION SHEET

CHEM SPLASH LAB COAT



FEATURES

Concealed stud front fastening with exposed stud to shoulder and collar.
Stand collar.
Single internal lower patch pocket.
Long sleeves with knitted cuffs.
Finished length: 110cm

FABRIC

Polyester/Cotton

WEIGHT

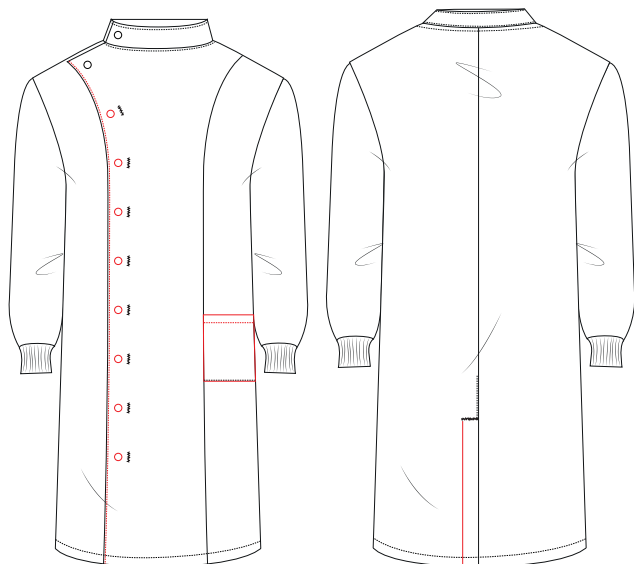
245gsm

FABRIC CARE

Industrial Laundry

SIZE RANGE

92cm - 140 cm



PERFORMANCE STANDARDS
EN 13034 or equivalent

STD COLOUR (stock supported)
COLOUR

 Super White