

# GARMENT SPECIFICATION SHEET

## ANTI-STATIC ESD LAB COAT



### FEATURES

Concealed stud front fastening.  
Single breast pocket, 2 lower pockets.  
Plain hemmed sleeves with 1 stud adjuster.

### FABRIC

68% Polyester  
30.5% Cotton  
1.5% Anti-Static

### WEIGHT

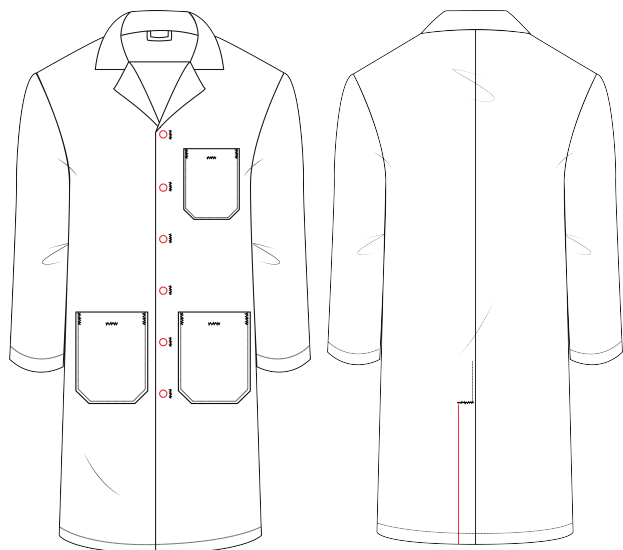
175gsm

### FABRIC CARE

Industrial Laundry

### SIZE RANGE

SML - 4XL



### PERFORMANCE STANDARDS

EN 1149-3 (Grounding not required)  
BS EN 61340-5-1

### STD COLOUR (stock supported) COLOUR

 White