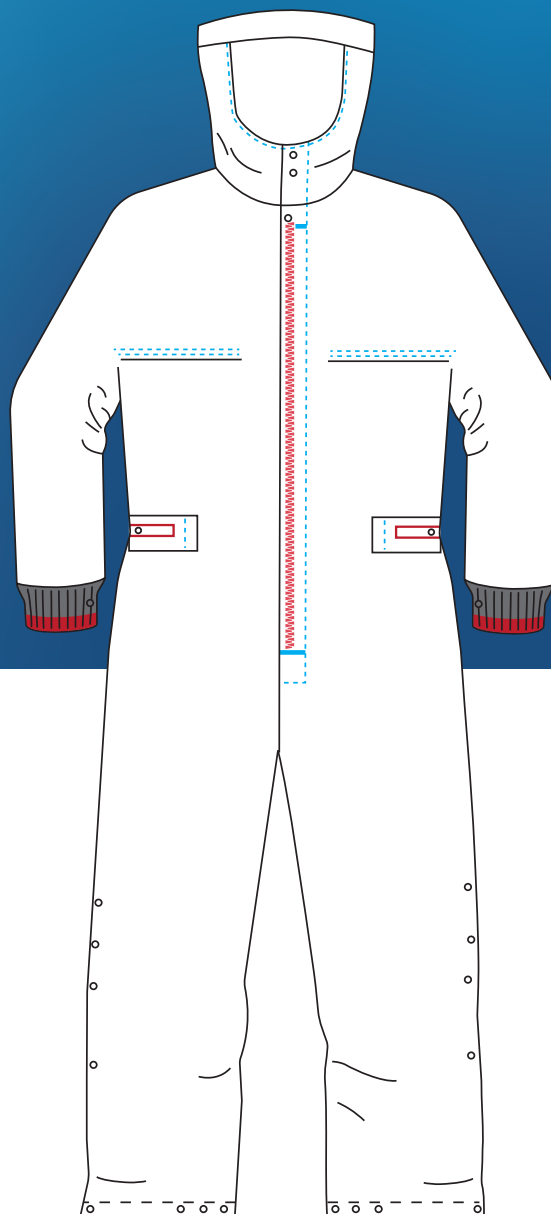


GARMENT SPECIFICATION SHEET

ESD CLEANROOM COVERALL WITH INTEGRAL HOOD

PROTRACK CODE | VE3



DESCRIPTION

Front fastening ESD Cleanroom Coverall with Integral Hood.

FEATURES

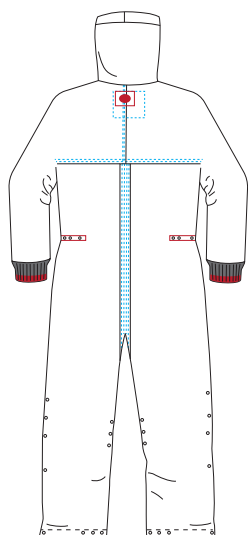
Elasticated cuff carries a grounding stud;
Hood, Cuff, Body and Sleeves constructed with integrated conductive tape that runs from the grounding stud at the cuff, along underarms and down to knee on both legs;
Knee stud allows for grounded connection of ESD Cleanroom Boots;
Front and back yoke seams constructed with integrated conductive tape which connects with the conductive tape at the sides;
No Pockets;
Stainless Steel Stud adjustments at waist and knee;
All panel edges are heat sealed;
Stainless Steel Stud adjustment fittings at neck and ankle.

FABRIC

Main - 98% polyester filament yarn / 2% anti-static grid
ESD Tape - 70% polyester / 30% carbon-nylon

WEIGHT

105gsm



STD COLOUR COLOUR | PROTRACK CODE

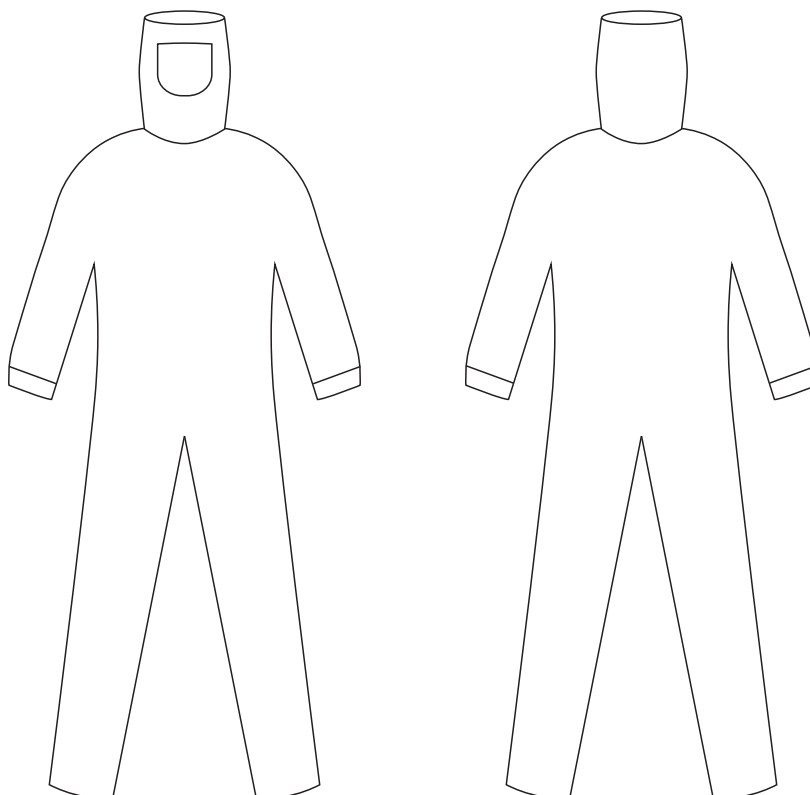
 Std Light Blue / VE3

NON STD COLOURS

 Navy

 Green

 White



SIZING INFORMATION

Reference	XSM	SML	MED	LGE	XLG	XXL	Tolerances
Chest	108.0	116.0	124.0	132.0	140.0	148.0	+2.0
Top Arm Sleeve	72.0	79.5	83.0	86.5	90.0	93.5	+2.0
Neck to Crotch	90.0	96.0	98.0	100.0	102.0	104.0	+2.0
Inside Leg	69.0	73.5	74.0	74.5	75.0	75.5	+2.0

WOVEN BARCODE LABELS

Woven barcode label sewn to pompadour patch at bottom edge and centred lockstitched all round.
Printed size/traceability label sewn into centre back neck.