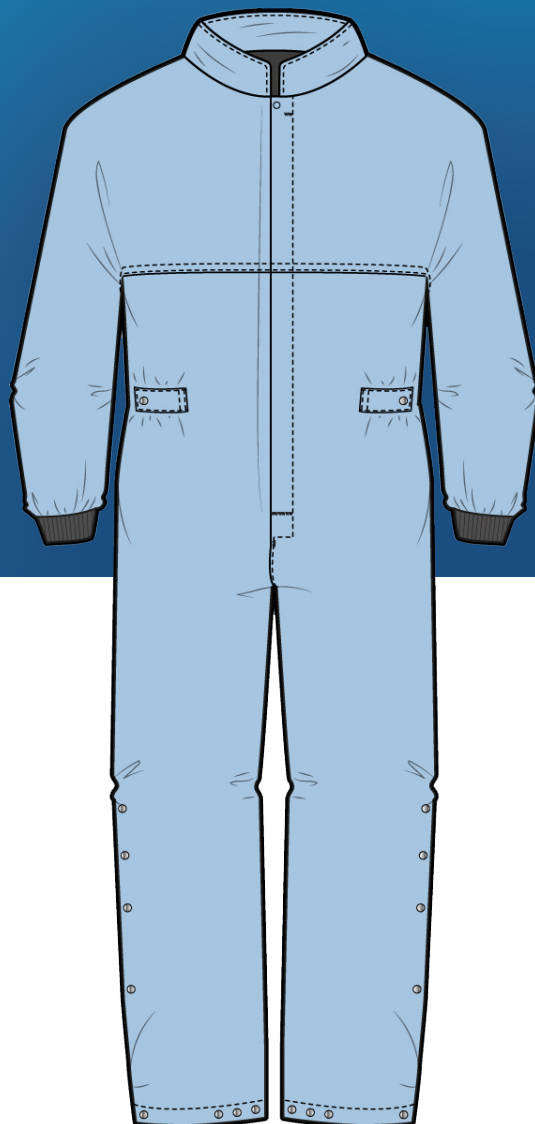


# GARMENT SPECIFICATION SHEET

## ESD CLEANROOM COVERALL

PROTRACK CODE | V41



### DESCRIPTION

Front fastening ESD Cleanroom Coverall

### FEATURES

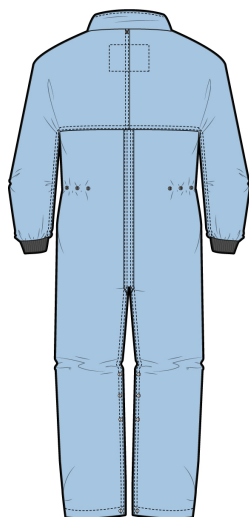
Elasticated cuff carries a grounding stud;  
Cuff, Body and Sleeves constructed with integrated conductive tape that runs from the grounding stud at the cuff, along underarms and down to mid-calf on both legs;  
Front and back yoke seams constructed with integrated conductive tape which connects with the is conductive tape at the sides;  
Stand Collar;  
Magyar sleeves;  
No Pockets;  
Stainless Steel Stud adjustments at waist and knee;  
All panel edges are heat sealed.

### FABRIC

Main - 98% polyester filament yarn / 2% anti-static grid  
ESD Tape - 70% polyester / 30% carbon-nylon


### WEIGHT

105gsm



### STD COLOUR

COLOUR | PROTRACK CODE

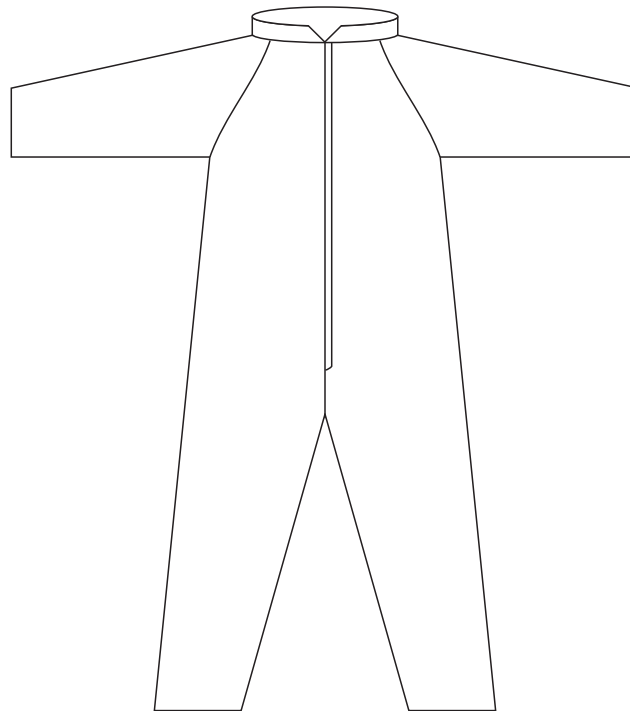
 Std Light Blue / V41

### NON STD COLOURS

 Navy

 Green

 White



## SIZING INFORMATION

Reference	XSM	SML	MED	LGE	XLG	XXL	Tolerances
Chest	108.0	116.0	124.0	132.0	140.0	148.0	+2.0
Top Arm Sleeve	72.0	79.5	83.0	86.5	90.0	93.5	+2.0
Neck to Crotch	90.0	96.0	98.0	100.0	102.0	104.0	+2.0
Inside Leg	69.0	73.5	74.0	74.5	75.0	75.5	+2.0

## WOVEN BARCODE LABELS

Woven barcode label sewn to pompadour patch at bottom edge and centred lockstitched all round.  
Printed size/traceability label sewn into centre back neck.