

GARMENT SPECIFICATION SHEET

BEMICRON

PROTRACK CODE | BM1



FEATURES

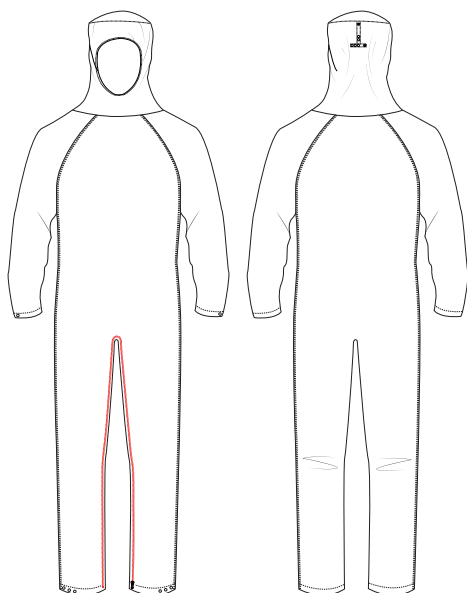
Gusset single zip fastening coverall with integral hood;
Suitable for autoclaving and gamma irradiation;
Stud adjustments for hood sizing and ankles;
Knitted cuffs for comfort;
Full cleanroom construction;
Heat sealed edges;
Seams are twin needle stitched.

FABRIC

98% polyester filament yarn
2% anti-static grid

WEIGHT

105gsm



STD COLOUR

COLOUR | PROTRACK CODE

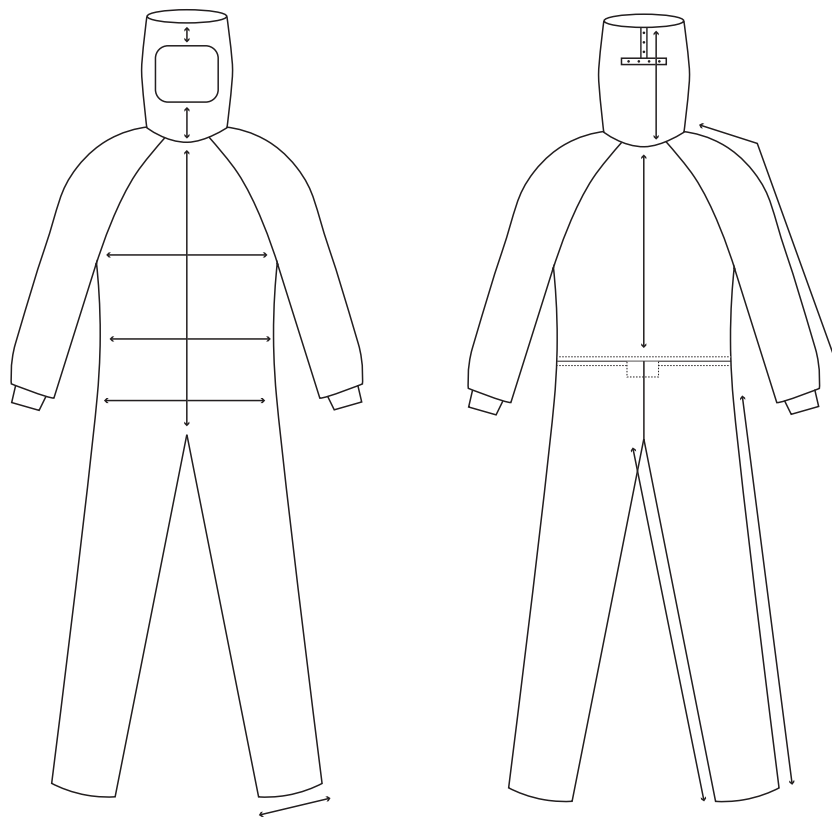
 Light Blue | BM1

NON STD COLOURS

 Navy

 Green

 White



SIZING INFORMATION

Reference	XXS	XS	S	M	L	XL	2XL	3XL	Tolerances
1- 1/2 chest girth	52	56	60	64	68	72	76	80	+1,5cm/-1,5cm
2- 1/2 waist girth - stretched elastic	47	51	55	59	63	67	71	75	+1,5cm/-1,5cm
3- 1/2 hip width	55	59	64	68.5	73	78	82.5	87.5	+1,5cm/-1,5cm
4- 1/2 seam width	23	23	24	25	25	26	26	26	+1,5cm/-1,5cm
5 - Side length	122	123	124	125	126	127	128	129	+2cm/-2cm
6 - Inner leg length	78	78	78	78	78	78	78	78	+2cm/-2cm
7 - Length of hood	29.6	30.2	30.8	31.3	32	32.6	33.2	33.8	+1,5cm/-1,5cm
8 - Height front of fore head	6.7	6.7	6.7	6.7	6.7	6.7	6.7	6.7	+2cm/-2cm
9 - Front length hood from neck to eye op.	16	16.5	16.5	17	17	17	17.5	18	+2cm/-2cm
10 - Sleeve length	78	80	82	84	85	86	87	88	+2cm/-2cm
11 - Back length	47	48	49	50	51	52	53	54	+2cm/-2cm
12 - Front length	68.5	70	71.5	73.5	75	76.5	78	79	+2cm/-2cm

TRANSPONDER AND BLUE TEXTURISED POLYESTER PATCH TO BE APPLIED

Patch to measure 10cm x 8cm

Transponder to be positioned in bottom right corner