

GARMENT SPECIFICATION SHEET

CLEANROOM COAT
PROTRACK CODE | C91

FEATURES

Lancer style coat;
Zip fastening at the left, as worn;
One lower internal patch pocket, to the right
as worn with stainless steel fastening closure;
One-piece set-in sleeves with polyester cuffing;
Stand collar.



FABRIC

98% polyester filament yarn
2% anti-static grid

WEIGHT

105gsm



STD COLOUR | PROTRACK CODE

 Light Blue | C91

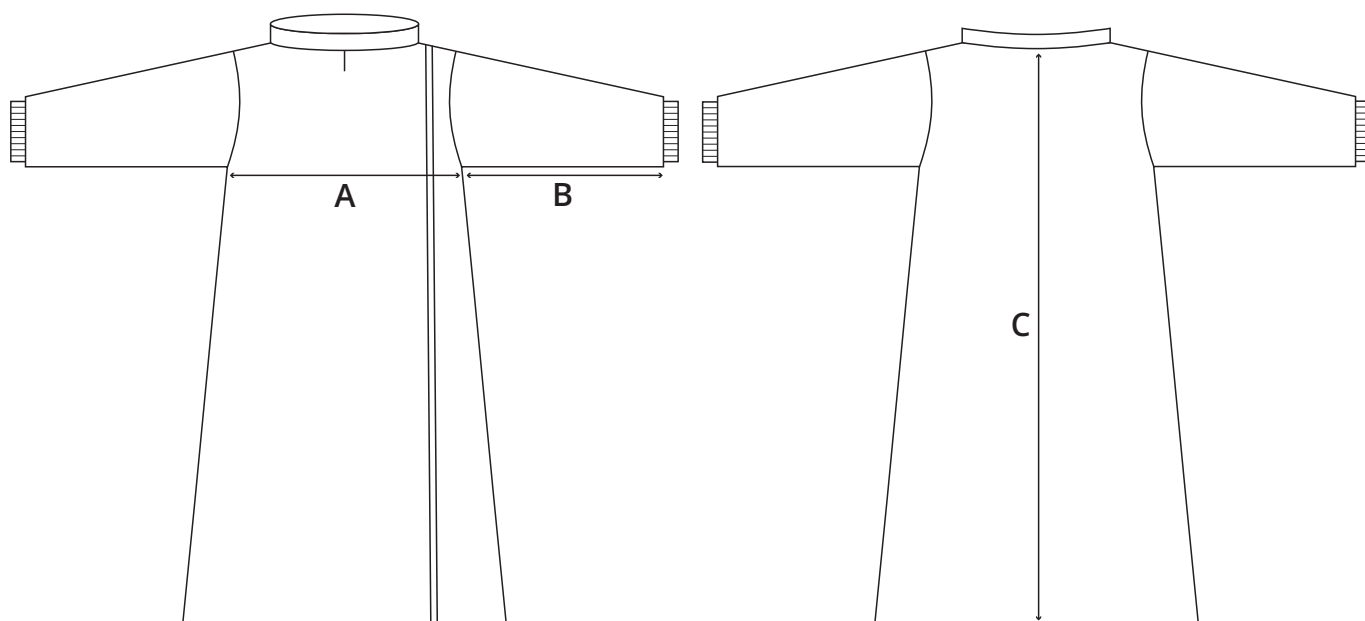
NON STD COLOURS

 Navy

 Green

 White

 Grey



SIZING INFORMATION

Reference	2XS	XS	S	M	L	XL	2XL	3XL	4XL	5XL	6XL	7XL	8XL	9XL	Tolerances
A - Chest	96	104	112	120	128	136	144	152	160	166	172	178	184	190	+/- 1
B - Underarm (excluding cuffing)	52	52	52	52	52	52	52	52	52	53	53	53	54	54	+/- 1
C - Length	110	110	110	110	110	110	110	110	110	110	110	110	110	110	+/- 1
D - Neck aperture	49	49	50	50	52	53	53	54	54	55	55	56	56	56	+/- 0.5

WOVEN BARCODE LABELS

Woven Barcode Label to be applied