

GARMENT SPECIFICATION SHEET

CLEANROOM HOOD
PROTRACK CODE | 400



FEATURES

Open faced hood with Stainless steel gripper stud closure at the centre front;
Twin needled side seams;
Horizontal stainless steel gripper stud adjustment at the rear 3 x Male and 1 x Female;
Vertical stainless steel gripper stud adjustments at rear 3 x Male and 1 Female;
Rear darts;
Long length cowl;
Heat sealed edges;
Full cleanroom construction and finishing.

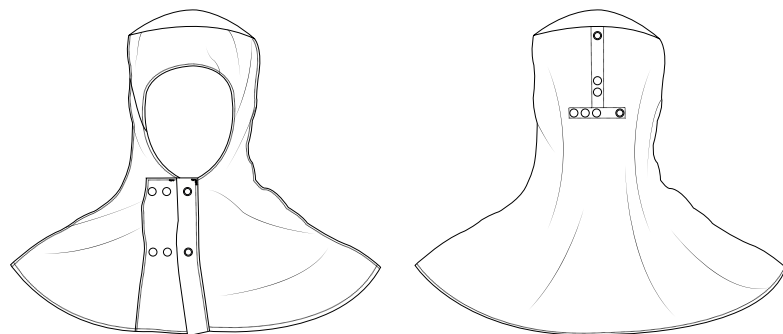


FABRIC

98% polyester filament yarn
2% anti-static grid

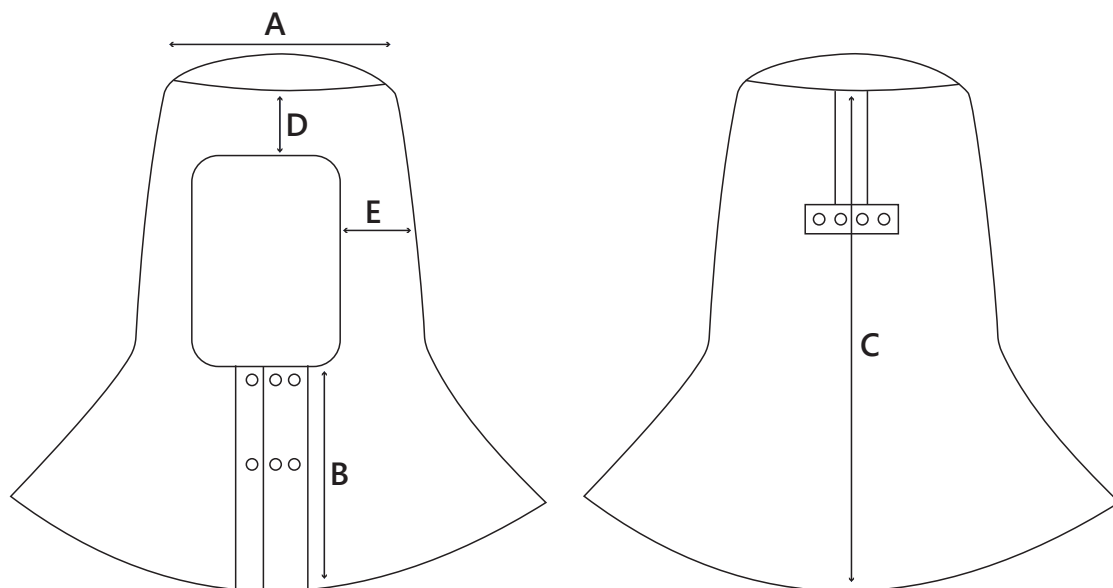
WEIGHT

105gsm



STD COLOUR | PROTRACK CODE

 Light Blue | 400



SIZING INFORMATION

Reference	2XS	XS	S	M	L	XL(REG)	2XL	3XL	4XL	Tolerances
A - Crown	14	15	16	16	17	17	18	19	20	+1
B - Front fastening	22	22	22	22	22	22	22	22	22	+1
C - Centre back	44	44	44	44	44	44	44	44	44	+1
D - Brow	6.5	6.5	6.5	6.5	6.5	6.5	6.5	6.5	6.5	+1
E - Side (measured 14cm below top seam)	8.5	9	9.5	10	10.5	11	11.5	11.5	11.5	+1

WOVEN BARCODE LABELS

To be positioned on the inside of front panel on the right-hand side as worn 5cm up from bottom hem and 2cm from front seam.