

GARMENT SPECIFICATION SHEET

**CLEANROOM COVERALL &
HOOD COMBINED**
PROTRACK CODE | BM1



FEATURES

Gusset single zip fastening coverall with integral hood;
Suitable for autoclaving and gamma irradiation;
Stud adjustments for hood sizing and ankles;
Knitted cuffs for comfort;
Full cleanroom construction;
Heat sealed edges;
Seams are twin needle stitched.

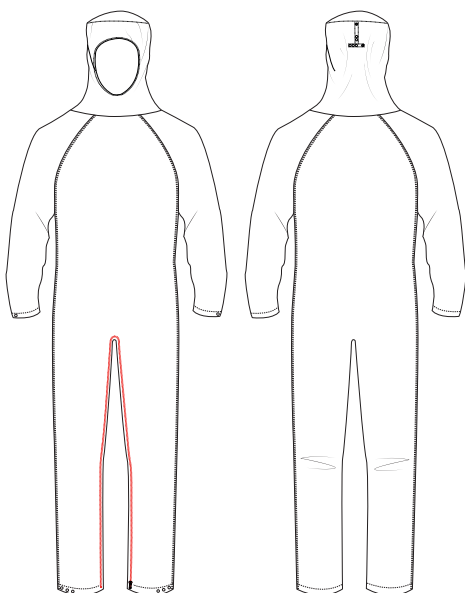


FABRIC


98% polyester filament yarn
2% anti-static grid

WEIGHT

105gsm



STD COLOUR | PROTRACK CODE

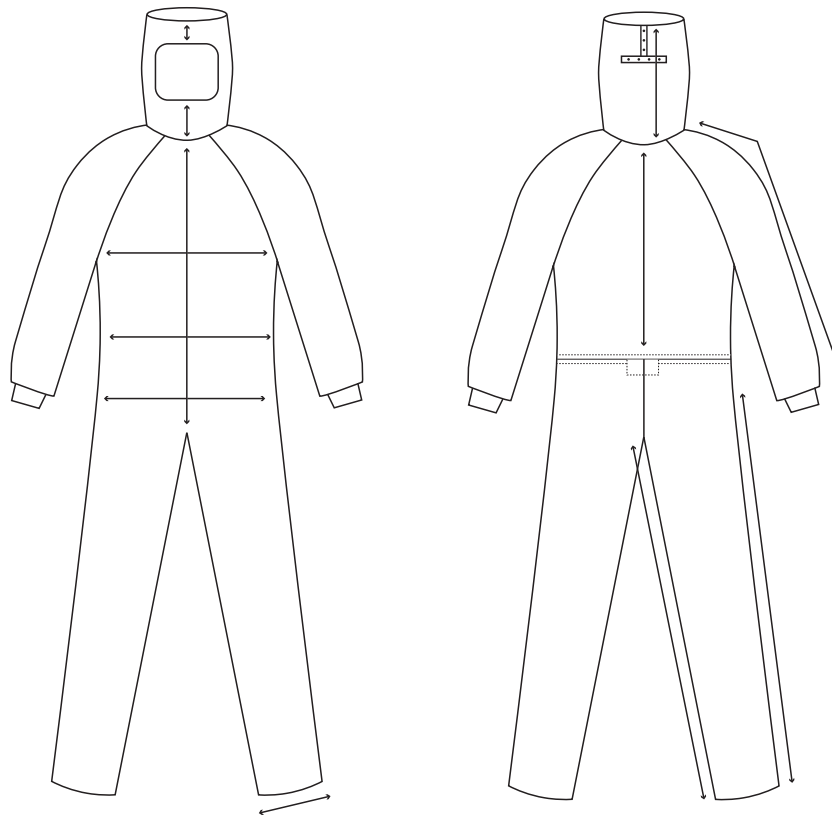
 Light Blue | BM1

NON STD COLOURS

 Navy

 Green

 White



SIZING INFORMATION

| Reference | XXS | XS | S | M | L | XL | 2XL | 3XL | Tolerances |
|--|------|------|------|------|-----|------|------|------|---------------|
| 1- 1/2 chest girth | 52 | 56 | 60 | 64 | 68 | 72 | 76 | 80 | +1,5cm/-1,5cm |
| 2 - 1/2 waist girth - stretched elastic | 47 | 51 | 55 | 59 | 63 | 67 | 71 | 75 | +1,5cm/-1,5cm |
| 3 - 1/2 hip width | 55 | 59 | 64 | 68.5 | 73 | 78 | 82.5 | 87.5 | +1,5cm/-1,5cm |
| 4 - 1/2 seam width | 23 | 23 | 24 | 25 | 25 | 26 | 26 | 26 | +2cm/-2cm |
| 5 - Side length | 122 | 123 | 124 | 125 | 126 | 127 | 128 | 129 | +2cm/-2cm |
| 6 - Inner leg length | 78 | 78 | 78 | 78 | 78 | 78 | 78 | 78 | +1,5cm/-1,5cm |
| 7 - Length of hood | 29.6 | 30.2 | 30.8 | 31.3 | 32 | 32.6 | 33.2 | 6.7 | +2cm/-2cm |
| 8 - Height front of fore head | 6.7 | 6.7 | 6.7 | 6.7 | 6.7 | 6.7 | 6.7 | 18 | +2cm/-2cm |
| 9 - Front length hood from neck to eye op. | 16 | 16.5 | 16.5 | 17 | 17 | 17 | 17.5 | 88 | +2cm/-2cm |
| 10 - Sleeve length | 78 | 80 | 82 | 84 | 85 | 86 | 87 | 54 | +2cm/-2cm |
| 11 - Back length | 47 | 48 | 49 | 50 | 51 | 52 | 53 | 79 | +2cm/-2cm |
| 12 - Front length | 68.5 | 70 | 71.5 | 73.5 | 75 | 76.5 | 78 | | |

TRANSPONDER AND BLUE TEXTURED POLYESTER PATCH TO BE APPLIED

Patch to measure 10cm x 8cm

Transponder to be positioned in bottom right corner