

GARMENT SPECIFICATION SHEET

STANDARD CLEANROOM COVERALL



FEATURES

Integral RFID Transponder;
Suitable for autoclaving and gamma irradiation;
Centre front zip fastening coverall;
Stud adjustments at neck, wrist and ankles;
Raglan sleeves;
Mandarin collar;
Full cleanroom construction;
Heat sealed edges;
Seams are twin needle stitched.

FABRIC WEIGHT

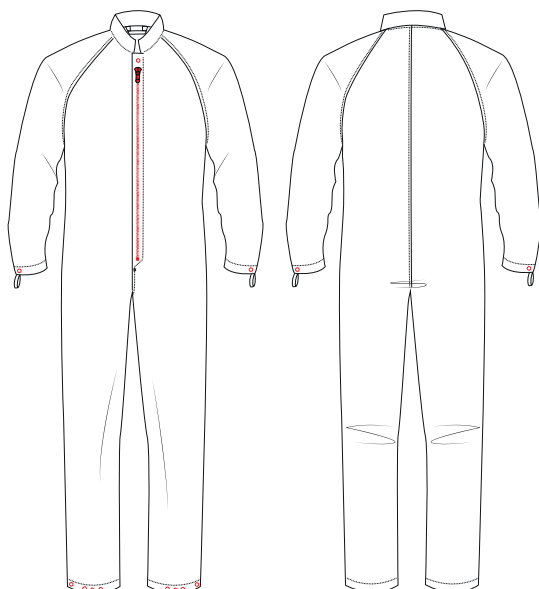
110 gsm

COMPOSITION

98% Polyester/ 2% Antistatic

WEAVING STRUCTURE

3/2 twill
5mm grid



EXPECTED GARMENT LIFE

100 cycles

APPLICABLE STANDARDS

Validated fabric and garment design to
IEST RP CC0003

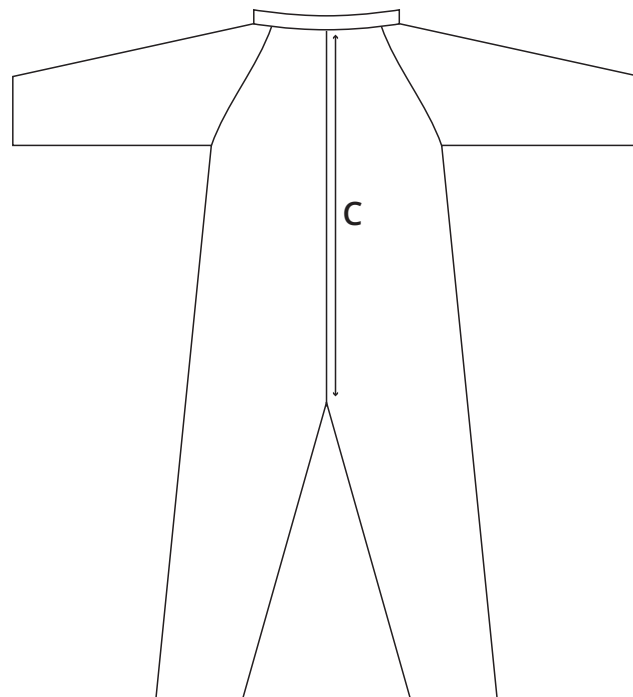
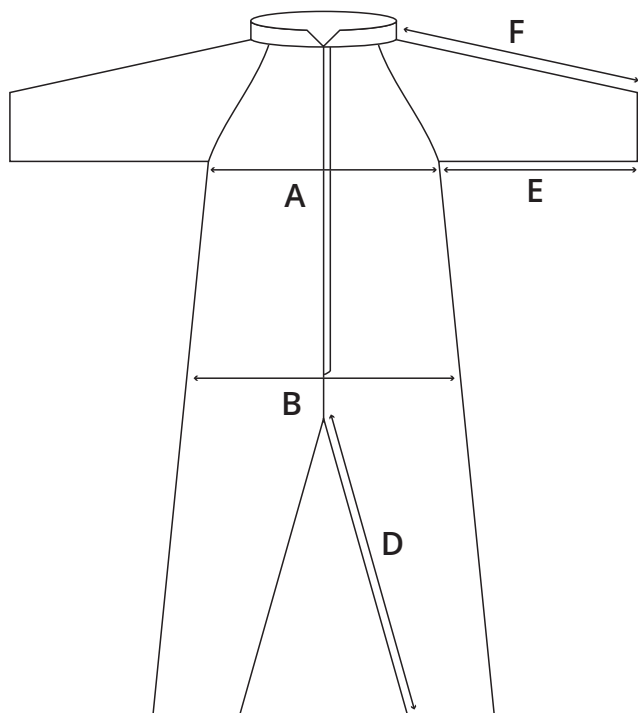


ESD type garment with Anti-Static nature

STD COLOUR



Light Blue



SIZING INFORMATION

Reference	3XS	2XS	XS	S	M	L	XL	2XL	3XL	4XL	5XL	6XL	7XL	8XL	Tolerances
A - Chest (half measure, 5cm below underarm) all sizes	45	48	51	54	57	62.5	65.5	69	74	78	82	86	90	94	+/- 1.5
B - Hips (half measure, 15cm above crotch) all sizes	49	51	53	56	59	64.5	68	71	76	80	84	88	92	96	+/- 1.5
C - Centre back, regular sizes	88	90	92	94	96	98	100	101	103	105	107	109	111	113	+/- 1.5
C - Centre back, tall sizes	93	95	97	99	101	103	105	106	108	110	112	114	116	118	+/- 1.5
C - Centre back, short sizes	83	85	87	89	91	93	95	96	98	100	102	104	106	108	+/- 1.5
D - Inside leg, regular sizes	70	72	72	74	74	77	77	77	78	78	78	79	79	79	+/- 1
D - Inside leg, tall sizes	75	77	77	79	79	82	82	82	83	83	83	84	84	84	+/- 1
D - Inside leg, short sizes	65	67	67	69	69	72	72	72	73	73	73	74	74	74	+/- 1
E - Underarm, regular sizes	49	50	51	53	53	54	54	54	55	55	55	56	56	56	+/- 1
E - Underarm, tall sizes	55	56	56	58	58	59	59	59	60	60	60	61	61	61	+/- 1
E - Underarm, short sizes	45	46	46	48	48	49	49	49	50	50	50	51	51	51	+/- 1
F - Overarm, regular sizes	75	78	81	84	86	88	90	92	94	95	96	97	97	97	+/- 1
F - Overarm, tall sizes	80	83	86	89	91	93	95	97	99	100	102	103	103	103	+/- 1
F - Overarm, short sizes	70	73	76	79	81	83	85	87	89	90	90	91	91	91	+/- 1