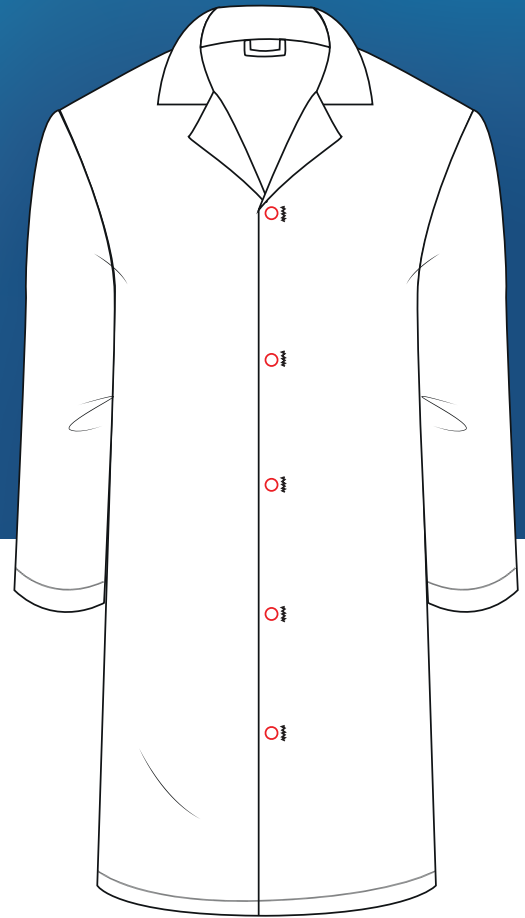


GARMENT SPECIFICATION SHEET

LAB COAT



FEATURES

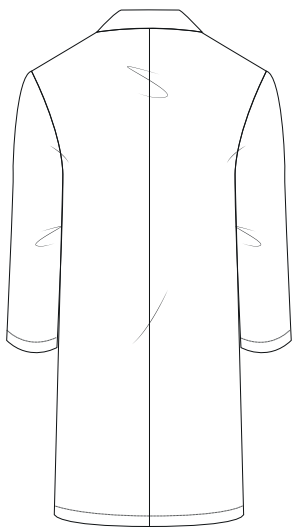
- Integral RFID Transponder
- Regular traditional collar
- Two side vents
- Stud fastening at wrist
- Pockets optional

COMPOSITION

65% Polycotton - 35% Polyester

SIZE

XS to 3XL



EXPECTED GARMENT LIFE

100 cycles

STD COLOUR

 White