

GARMENT SPECIFICATION SHEET

UNDERGARMENT TUNIC
PROTRACK CODE | MW9



FEATURES

Polyester fabric Tunic with 3cm wide opening placket at front with exposed Stainless-Steel fastening (three studs);

One-piece back;

One-piece long sleeves with 5cm Polyester/Lycra cuffing.

Cuffing to be cut as follows:

- :: Sizes 3xsmall – small, 22cm x 19cm
- :: Sizes medium – large, 23cm x 19cm
- :: Sizes xlarge – 2xlarge, 24cm x 19cm
- :: Size 3xlarge, 25cm x 19cm

No pockets;

Neck edge bound in self-fabric;

9cm vents at both side seams;

No collar;

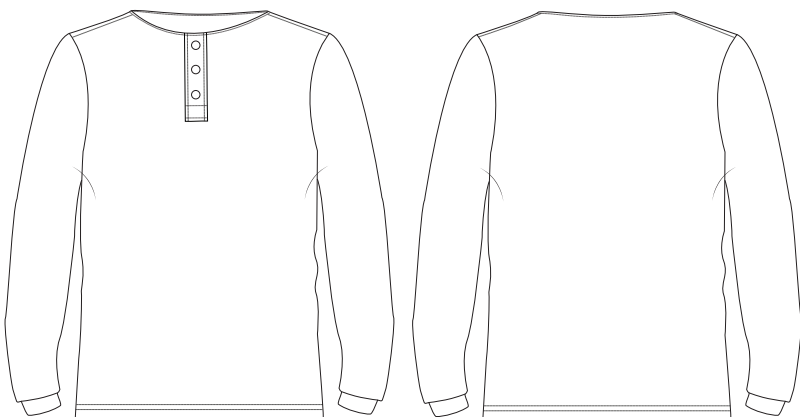
Twin needle Cleanroom seams.

FABRIC


100% polyester

WEIGHT

85gsm

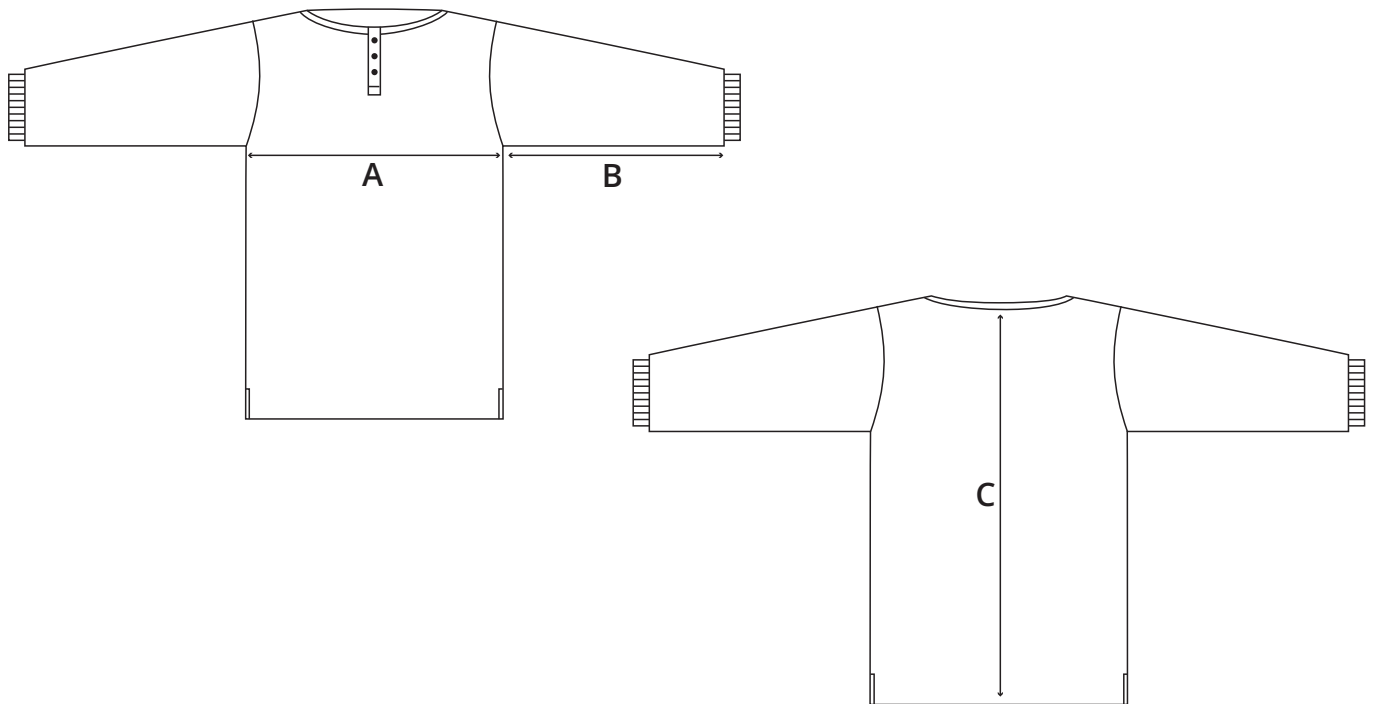


STD COLOUR | PROTRACK CODE

 Navy | 276-003

NON STD COLOURS

 Green



SIZING INFORMATION

Reference	3XS	2XS	XS	S	M	L	XL	2XL	3XL	4XL	5XL	6XL	7XL	Tolerances
A - Chest	79	90	101	113	125	125	141	149	157	165	173	181	189	+/- 2
B - Underarm (including cuffing)	53	53	53	53	53	53	53	53	53	53	54	54	54	+/- 1
C - Centre back length	65	66	67	70	70	70	72	73	74	75	76	77	78	+/- 2

TRANSPONDER AND BLUE TEXTURISED POLYESTER PATCH TO BE APPLIED

Patch to measure 10cm x 8cm

Transponder to be positioned in bottom right corner