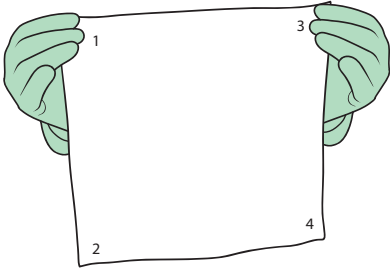


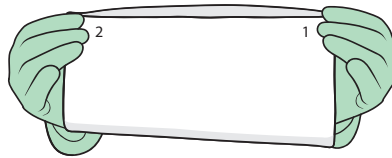


HOW TO USE STERILE WIPES - 8 FOLD METHOD

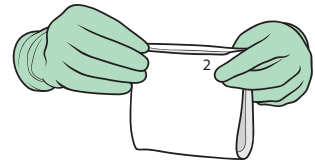
1 Take out one wipe from the packet.



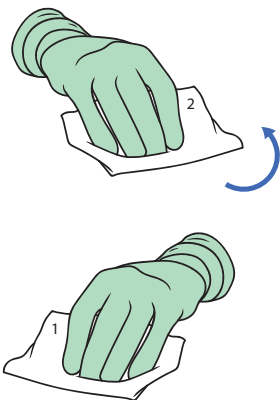
2 Fold the wipe in half.



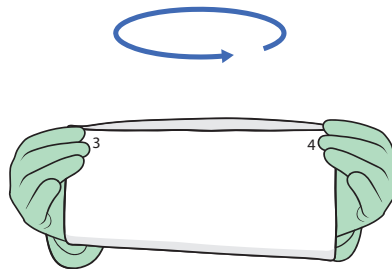
3 Fold the wipe in half again.



4 Clean the surface using one side. Turn the wipe over and use the other side.



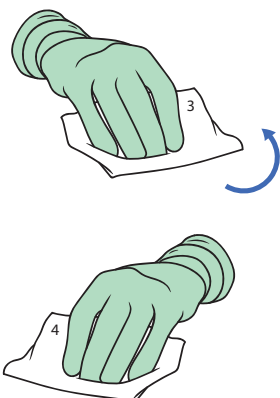
5 Undo your last fold. Flip the wipe.



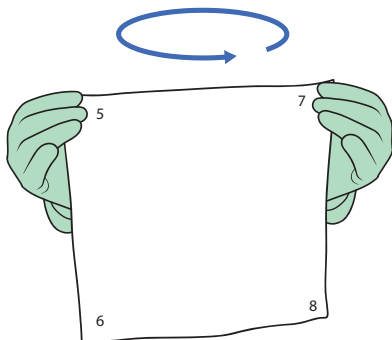
6 Fold the wipe so that the inverse sides are revealed.



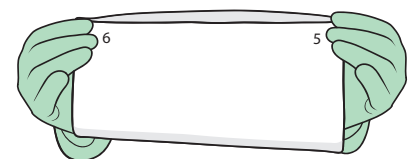
7 Clean the surface using one side. Turn the wipe over and use the other side.



8 Open out the wipe. Flip the wipe and repeat the process.



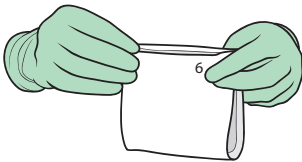
9 Fold the wipe in half.



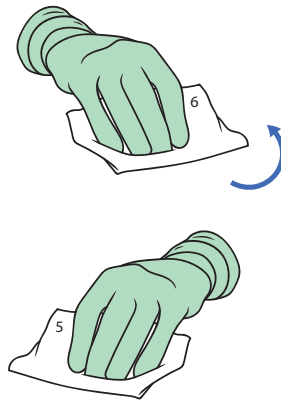


HOW TO USE STERILE WIPES - 8 FOLD METHOD

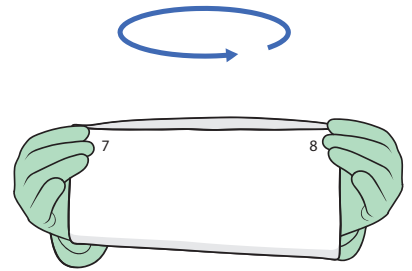
10 Fold the wipe in half again.



11 Clean the surface using one side. Turn the wipe over and use the other side.



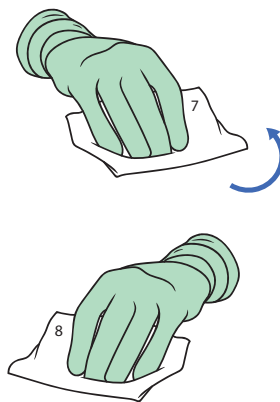
12 Undo your last fold. Flip the wipe.



13 Fold the wipe so that the inverse sides are revealed.



14 Clean the surface using one side. Turn the wipe over and use the other side.



This procedure provides guidance only and local procedures should be fully validated.

For more information about our range of wipes, please contact us:

Micronclean, Skegness,
Lincolnshire, UK, PE25 3AX
W: www.micronclean.co.uk
T: +44 (0)1754 767377
E: SalesEnquiries@micronclean.co.uk

